

6

## 关于推动营口市民营经济发展提质增效 的对策建议

2022

80%

2023 11

" "

" "

2022

1

7000

" "

2018—2021

2022

" " 2022

" "

90%

" " "

" " " "

" " " " "

Ž \$ Ž

2023

25629

"

"

72542

" "

2022

1.7

121

150

"

"

"

"

258

30

LNG

"

.

"

5

800

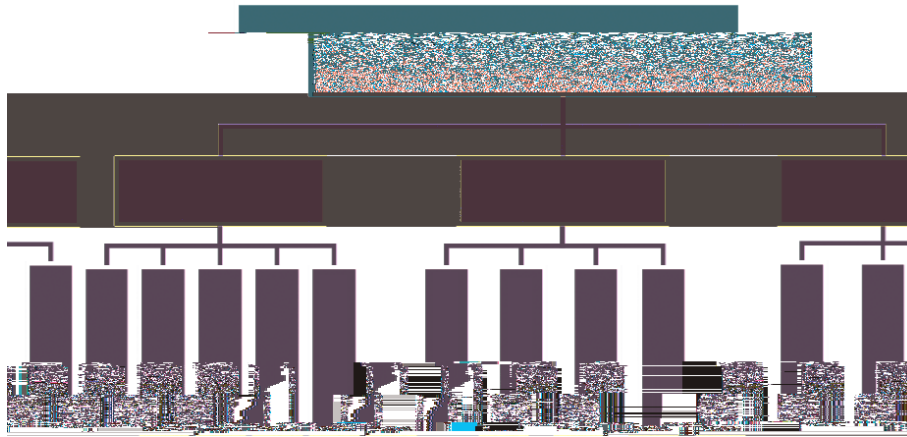
2

Ž % Ž



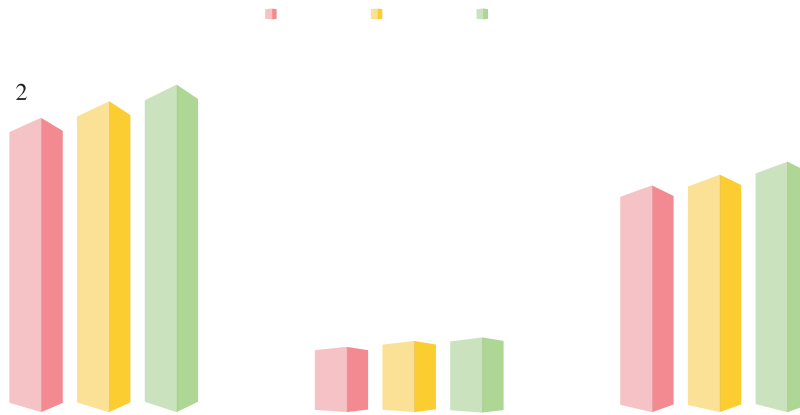
1 351.3 2  
 100% 10 94

" 5+4+3"

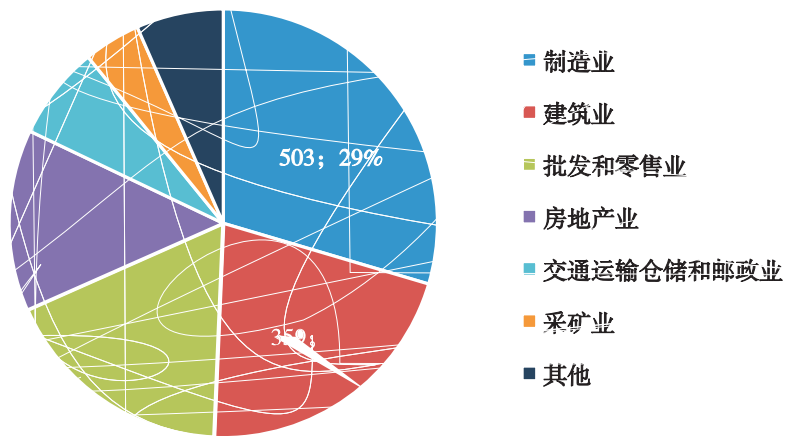


1

2020 27.9  
 97% 5.7%  
 2022 6.5  
 6.4% 21.4 5.4%



2 2020—2022



3 2022

2022

111  
180

" 2022

10 11

ž ( ž

" 500 "  
500 "

376

3

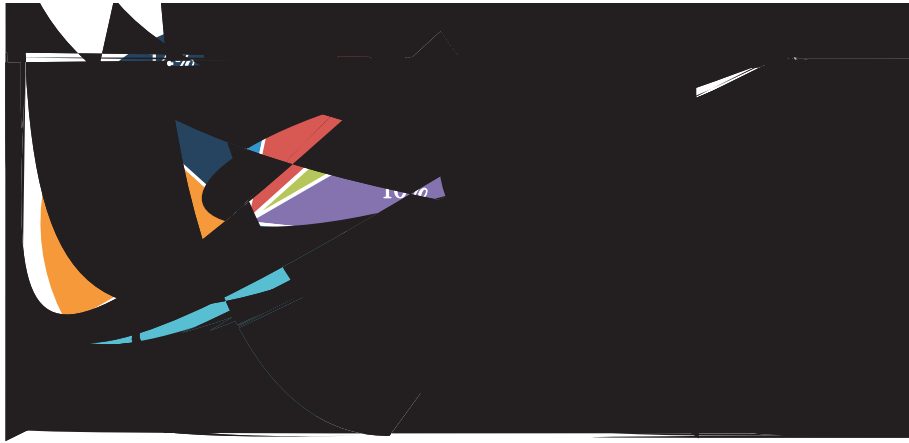
“

”

5  
19 2022  
3.92  
2657 143 1  
19 44  
1 2400 22542  
29 7 1  
246  
1 61 123  
111



	6		30	2022
8			2	6
				2022
	70		11.35	
			138.9	
71.9%			293.5	
	67.7%		2.32	
	0.5%		195.1	45.0%
	236.4	54.5%		
	90%		"	"
		2022		9473
	2.2	34.2		11752
		8600.88	20.9	
1273		35840.49		
			"	"
			6	55
	1			
7000				



7 2022

" "

" "

90%

" "

" "

2022

2022

"

"

"

"

"

"

Ž ## Ž

"

"

"

"

"

"

"

"

"

"

ž # \$ ž

—

Ž #% Ž

" "

" "

" "

" "

" "

"

"

RCEP

RCEP

Ž #& Ž

Ž # Ž

( )

-

20

"

7

"

20

4

---

---

"\$&Ž(\$("\$&&(\$

---

Ž # ( Ž